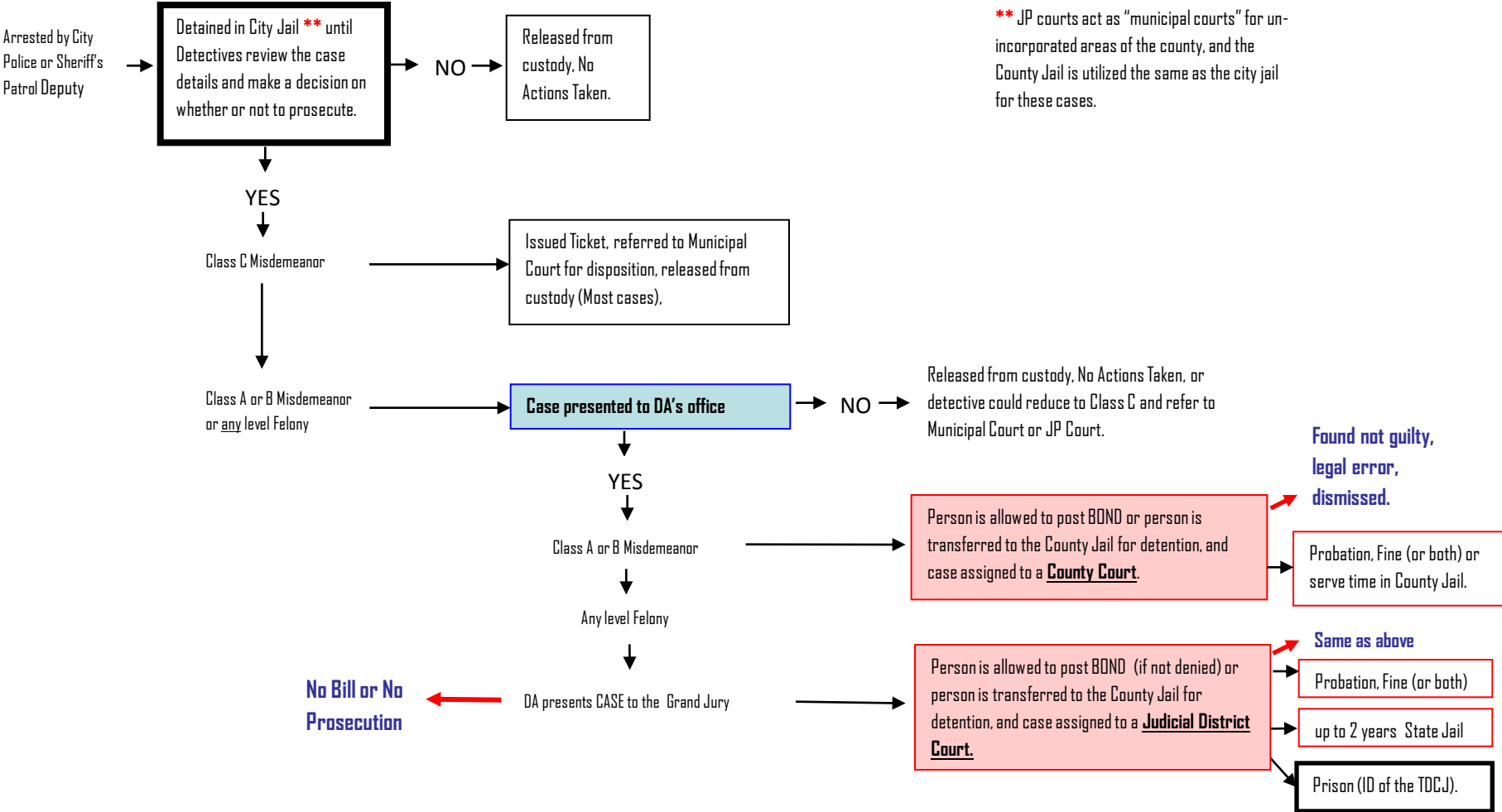


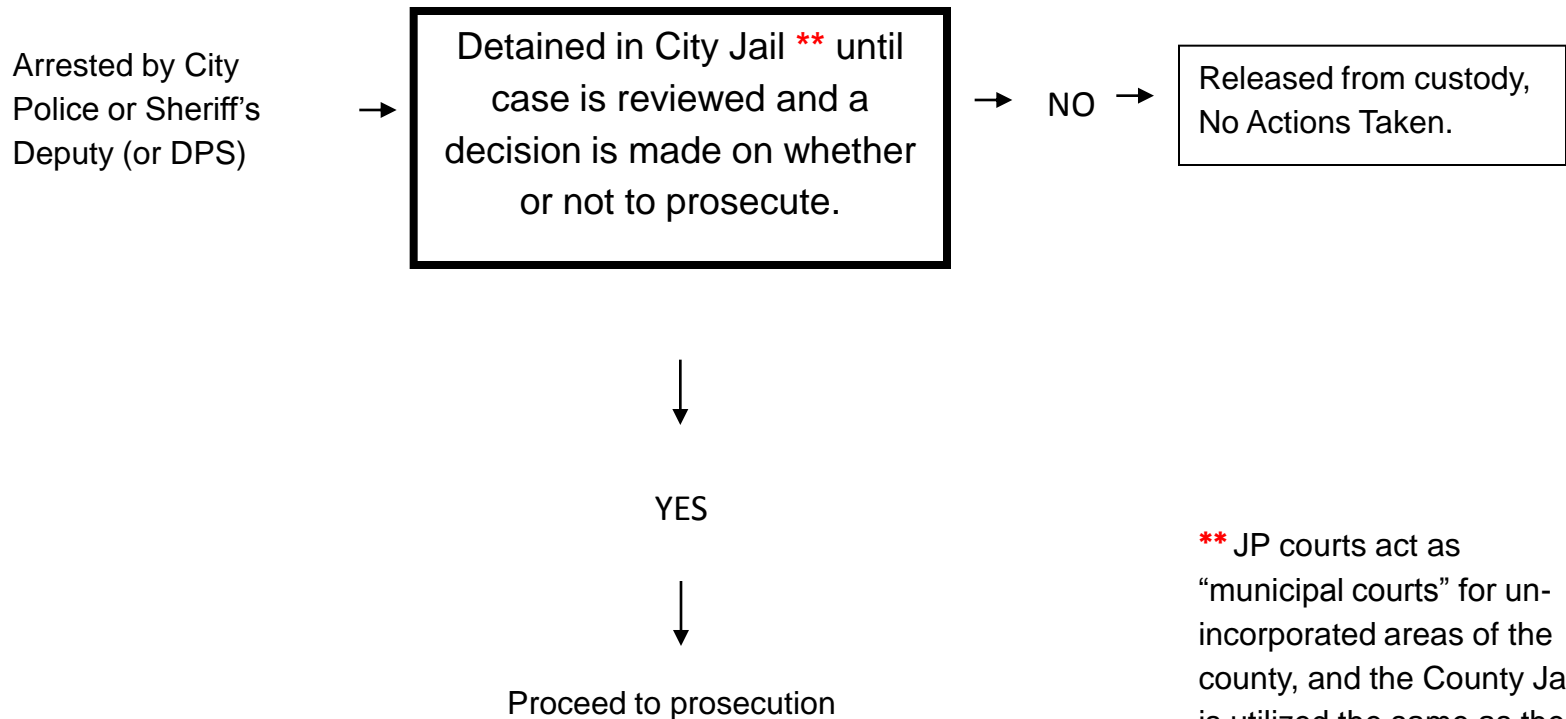
Overview

Flow of the Criminal Justice System



Flow of the Criminal Justice System - Continued

Breakdown – Slide 1

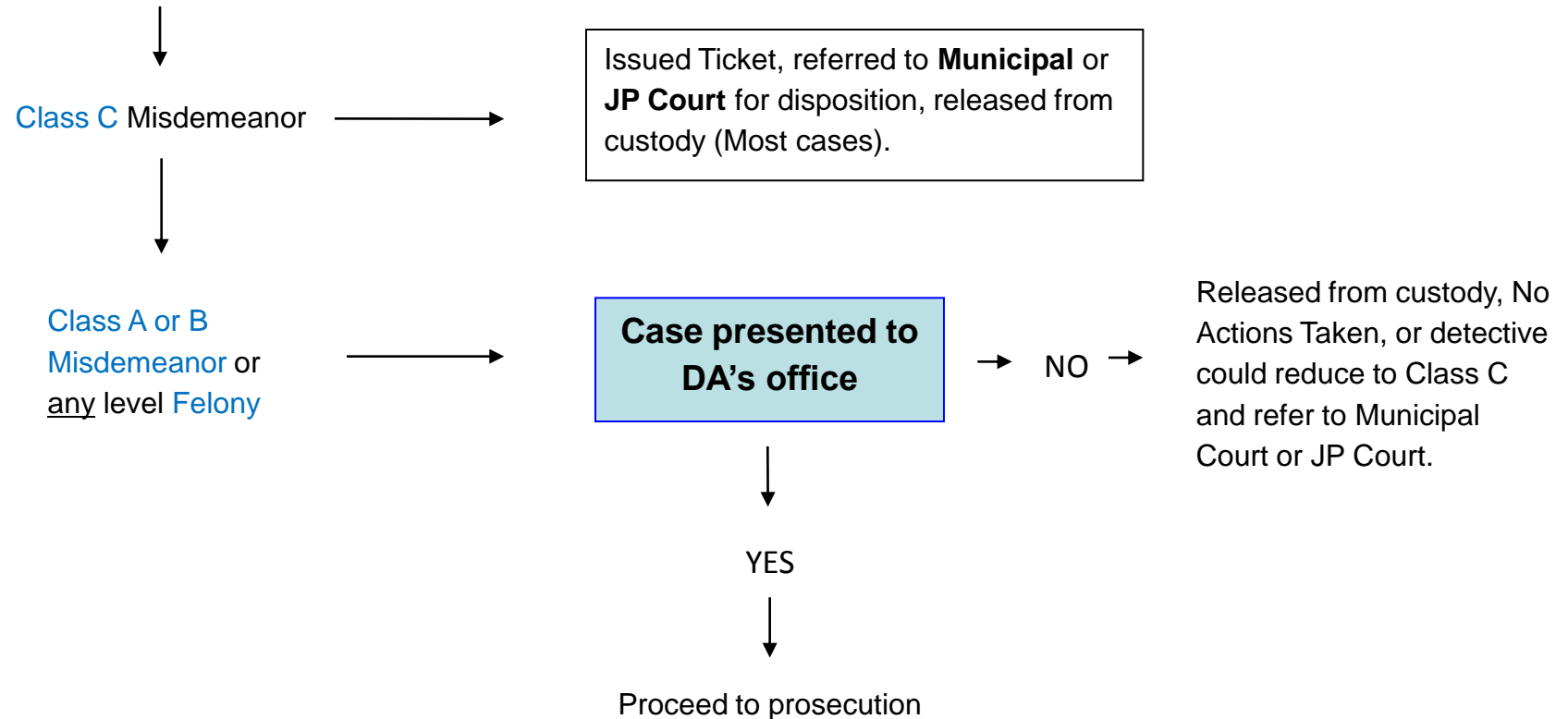


** JP courts act as “municipal courts” for unincorporated areas of the county, and the County Jail is utilized the same as the city jail for these cases.

Flow of the Criminal Justice System - Continued

Breakdown – Slide 2

Proceed to prosecution



Flow of the Criminal Justice System - Continued

Breakdown – Slide 3

Proceed to prosecution

YES



Class A or B
Misdemeanor



Any level **Felony**



Person is allowed to post BOND or person is transferred to the County Jail for detention, and case assigned to a **County Criminal Court**.

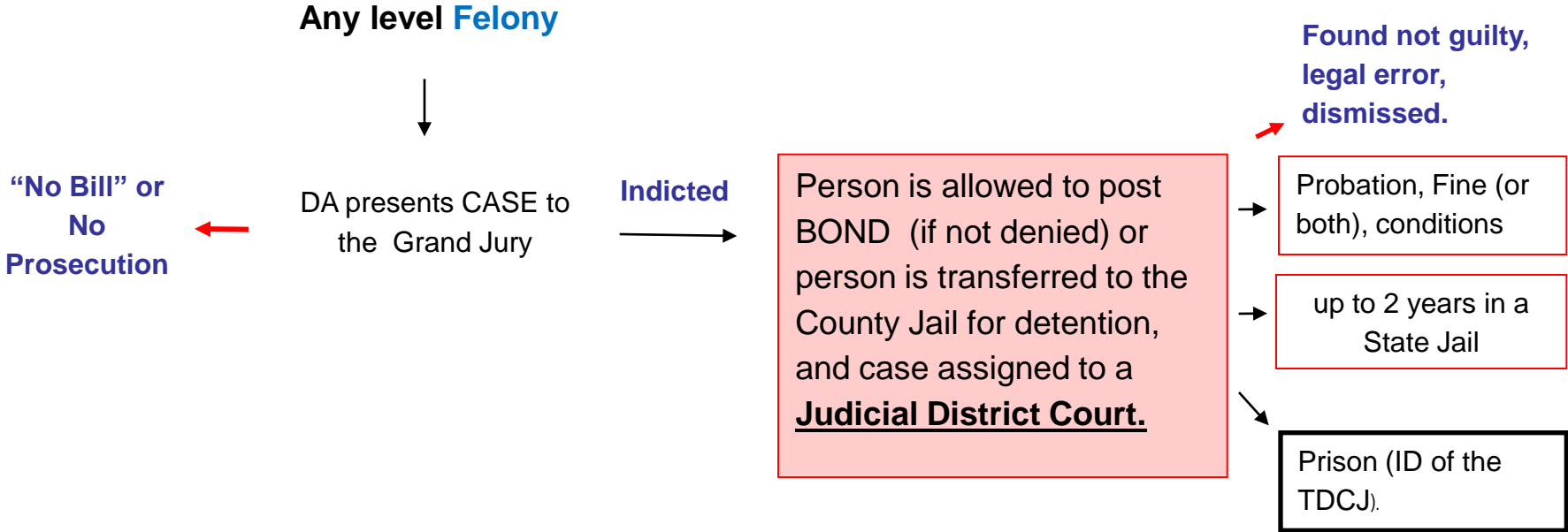


Found not guilty, legal error, dismissed.

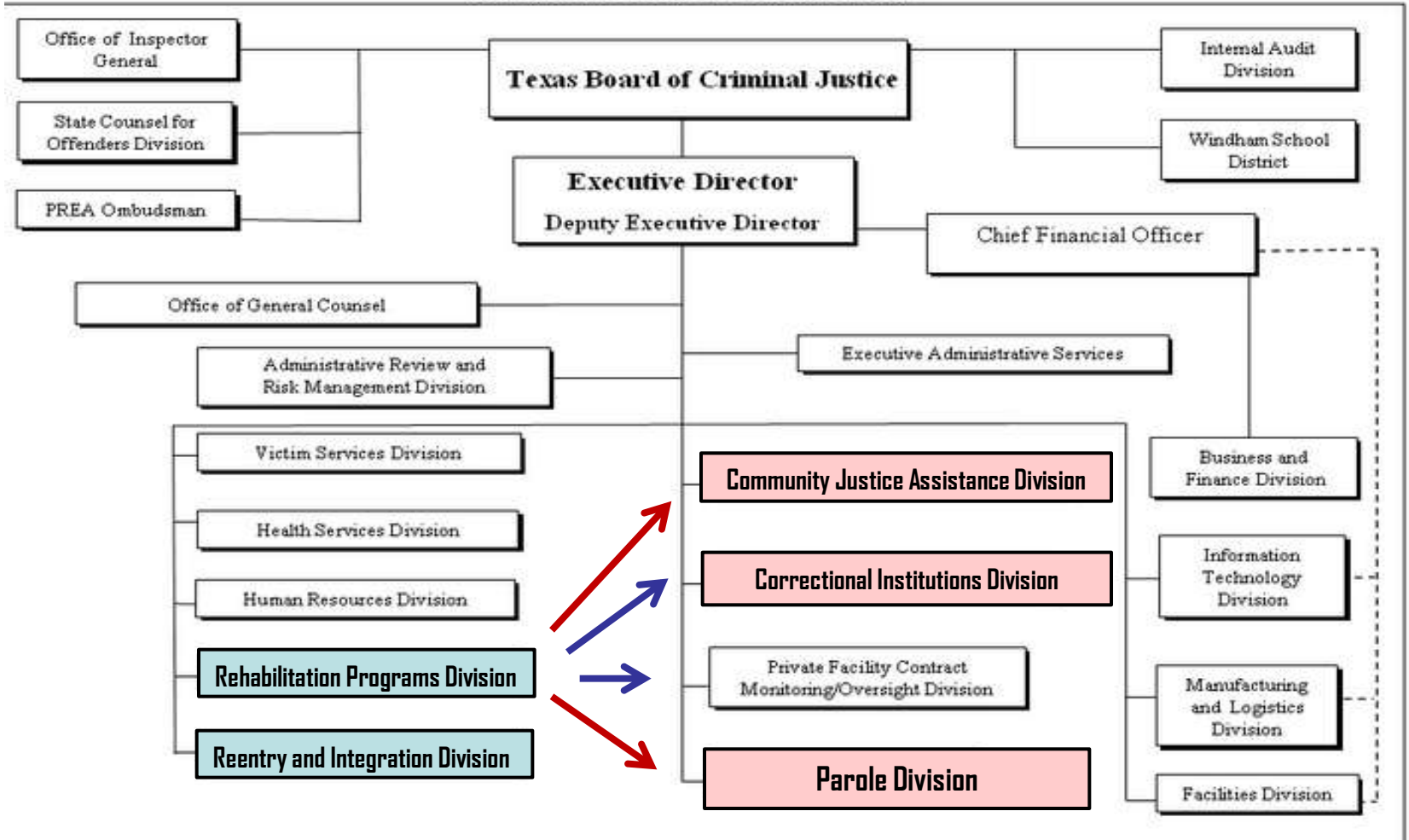
Probation, Fine (or both) and/or serve time in County Jail, up to 2 years (max).

Flow of the Criminal Justice System - Continued

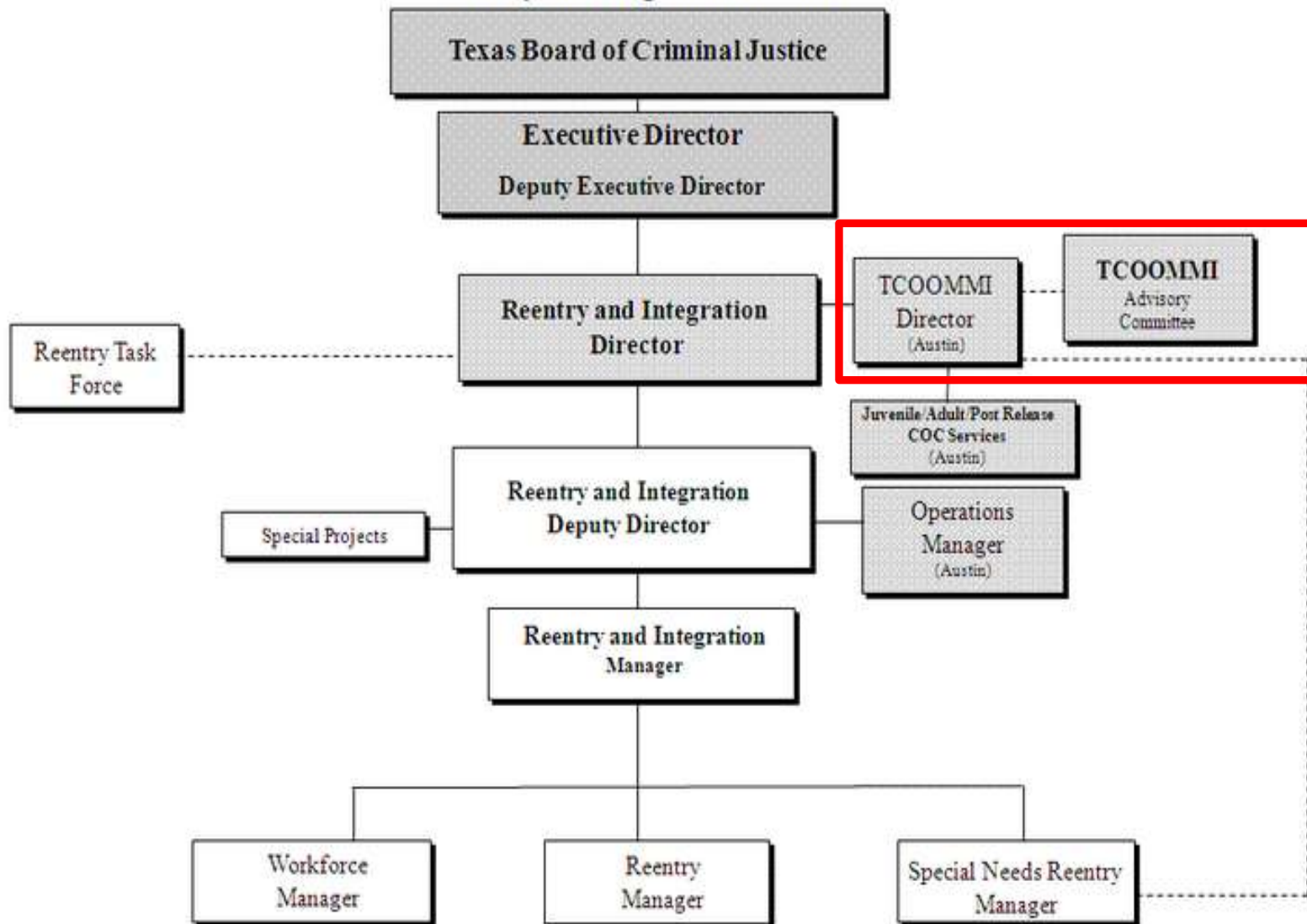
Breakdown – Slide 4



**TEXAS DEPARTMENT OF CRIMINAL JUSTICE
ORGANIZATIONAL STRUCTURE**



TEXAS DEPARTMENT OF CRIMINAL JUSTICE
ORGANIZATIONAL STRUCTURE
Reentry and Integration Division



Tarrant County CSCD Central Office and Field Service Units

